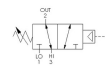




22 Spring Valley Rd.  
Paramus, NJ 07652  
(201) 843-2400  
sales@versa-valves.com

# Pressure Sensor, Single Unit

**BAA-8302-912-44**



## Description

### Stainless Steel Pressure Sensor

The VERSA pneumatic/hydraulic Pressure Sensor, or Stick Pilot, is designed to protect equipment and installations against abnormal pressures.

It is available in pressure ranges up to 10,000 psi. It is also available in a dual configuration for a high/low pressure sensor system.

## Product Features

- Constructed of SAE 316L marine grade stainless steel conforming to NACE standard MR-01-75 suitable for direct exposure to sour environments
- Low-temperature Buna o-ring seals for low-temperature applications down to -40°F

## 100% Leak Tested • 10-Year Warranty

## Specifications

Actuation	Block and Bleed Pilot with Automatic Reset - adjustable pilot range
Function	Selector (2 inlets-1 outlet), 2-pos [8-way]
Port Size	Body Ported, 1/4" NPT
Valve Pressure Range (PSI)	10-150 psi
Valve Pressure Range (BAR)	0.70-10.3 bar
Primary Flow	0.12 Cv
Media	Air - Inert Gas, Hydraulic, Natural Gas
Pilot Pressure Range (PSI)	50-260 psi
Pilot Pressure Range (BAR)	3.45-17.9 bar
Temperature Range (F)	-31°F to 149°F
Temperature Range (C)	-35°C to 65°C
Body & Internal Parts	316L Stainless Steel
Weight	4.880000

This spec sheet is intended for informational purposes only and while VERSA strives for accuracy, same does not constitute a warranty or guarantee, express or implied, regarding any products or services described herein. VERSA reserves the right to amend its product designs, details, specifications, and other information at any time without prior notice. VERSA also publishes information on its website at [VERSA-Valves.com](https://www.versa-valves.com) and information can be sought by contacting customer service at 201-843-2400 option 3, or emailing to [sales@versa-valves.com](mailto:sales@versa-valves.com).