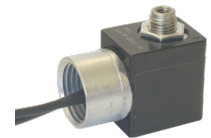
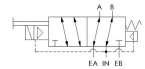
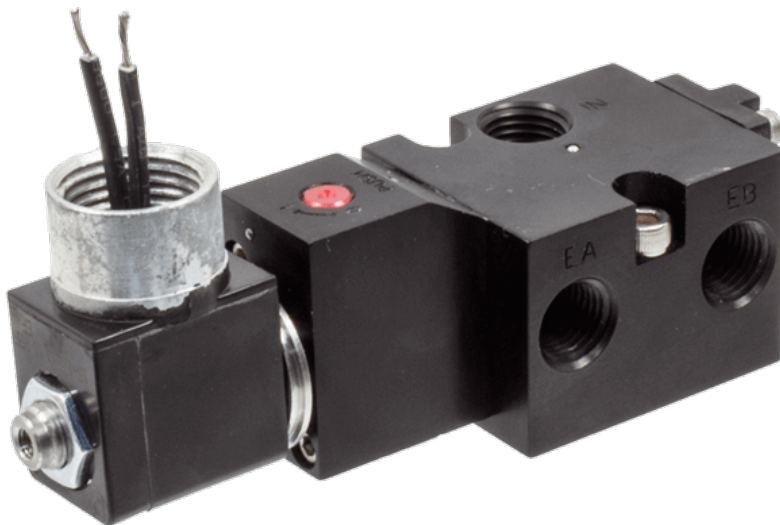




22 Spring Valley Rd.
Paramus, NJ 07652
(201) 843-2400
sales@versa-valves.com

Valve, 4-Way, Alum, 24VDC

CGS-4232-NB1-228L-D024



Specifications

Actuation	Solenoid-Pilot Spring Return
Function	4-way, 2-pos
Port Size	NAMUR 1/4" NPT
Valve Pressure Range (PSI)	15-150 psi
Valve Pressure Range (BAR)	1.03-10.3 bar
Primary Flow	0.75 Cv
Media	Air - Inert Gas, Natural Gas
Temperature Range (F)	-4°F to 104°F
Temperature Range (C)	-20°C to 40°C
Body & Internal Parts	Aluminum
Weight	0.770000

Solenoid Specifications

Solenoid Description	GP - EZ Class - DC only
Voltage	24 V DC \pm 10% (D024)
Power	10.5 W
Inrush Current (mA)	440
Holding Current (mA)	440
Resistance Ω	54.6
Ingress Protection Rating	NEMA 1,2,3
Electrical Protection	Not applicable
Coil Class	Std
Solenoid Housing Material	Engineered Polymer
Solenoid Seal Material	Buna
Solenoid Connection	1/2" NPT female conduit with 24" wires

This spec sheet is intended for informational purposes only and while VERSA strives for accuracy, same does not constitute a warranty or guarantee, express or implied, regarding any products or services described herein. VERSA reserves the right to amend its product designs, details, specifications, and other information at any time without prior notice. VERSA also publishes information on its website at [VERSA-Valves.com](https://www.versa-valves.com) and information can be sought by contacting customer service at 201-843-2400 option 3, or emailing to sales@versa-valves.com.