



22 Spring Valley Rd.
Paramus, NJ 07652
(201) 843-2400
sales@versa-valves.com

Valve, 4-Way, Alum, 12VDC

CSG-4202-D012

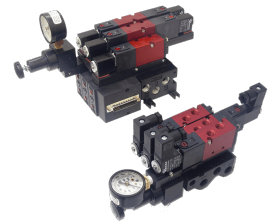
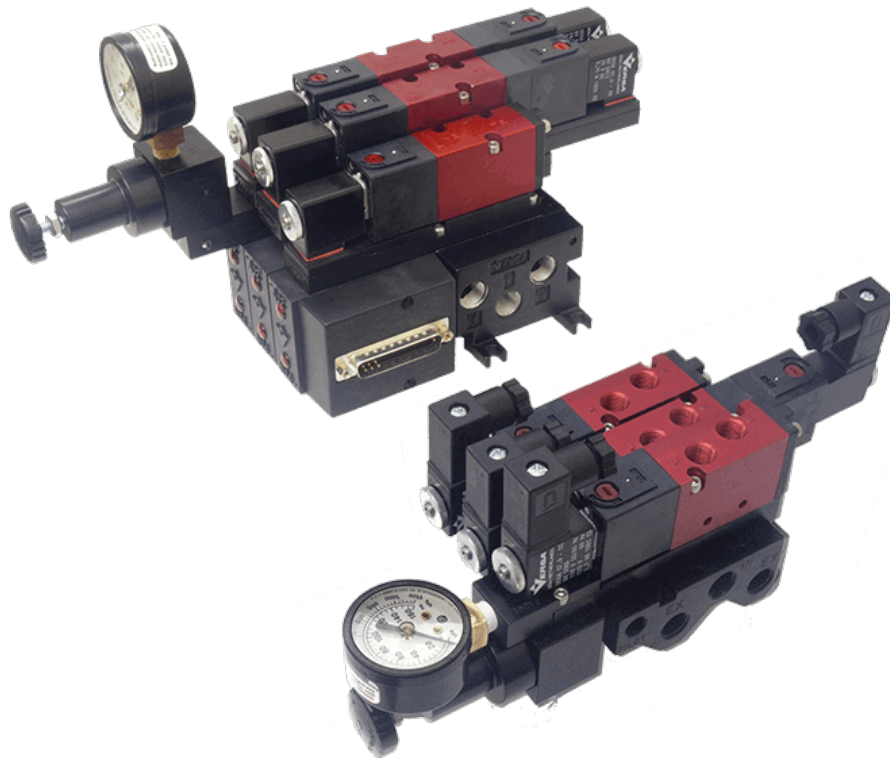


Image for reference only.
May not reflect actual product configuration.

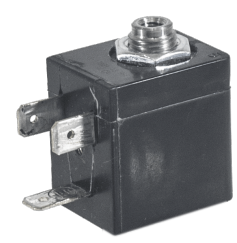
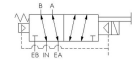


Image for reference only.
May not reflect actual product configuration.

© 2018 Versa Products Co., Inc.

Description

C5 Series Directional Control Valve

VERSA C-Series C5 aluminum valves are multi-purpose pilot-operated pneumatic valves consisting of two body types, side ported and manifold

mounted. A balanced, packed spool is the flow-controlling element of each valve. The use of elastomer sealing provides bubble-tight operation and an efficient process due to no waste of leaking air.

Product Features

- Constructed of hard yet lightweight, corrosion-resistant anodized aluminum
- FKM o-ring seals perform reliably with exposure to hydrocarbons or highly corrosive fluids over a broad temperature range: equivalent to Viton®, Fluorel®

Solenoid Features

- Solenoid coil connection: mini molded 3 spade coil (EN 175301-803 Form B)

100% Leak Tested • 10-Year Warranty

Specifications

| | |
|----------------------------|--------------------------------|
| Actuation | Solenoid-Pilot Spring Return |
| Function | 4-way, 2-pos |
| Port Size | Body Ported, 1/8" NPT |
| Valve Pressure Range (PSI) | VAC-115 psi |
| Valve Pressure Range (BAR) | VAC-7.93 bar |
| Primary Flow | 0.75 Cv |
| Media | Air - Inert Gas, Natural Gas |
| Pilot Pressure Range (PSI) | 15-115 psi |
| Pilot Pressure Range (BAR) | 1.03-7.93 bar |
| Temperature Range (F) | -4°F to 104°F |
| Temperature Range (C) | -20°C to 40°C |
| Body & Internal Parts | Aluminum |
| Weight | 0.580000 |

Solenoid Specifications

| | |
|---------------------------|------------------------------------|
| Solenoid Description | GP - EZ Class - DC only |
| Voltage | 12 V DC \pm 10% (D012) |
| Power | 10.5 W |
| Inrush Current (mA) | 863 |
| Holding Current (mA) | 863 |
| Resistance Ω | 13.9 |
| Ingress Protection Rating | NEMA 1,2,3 |
| Electrical Protection | Not applicable |
| Coil Class | Std |
| Solenoid Housing Material | Engineered Polymer |
| Solenoid Seal Material | FKM |
| Solenoid Connection | Molded 3 spade coil, mini (Form B) |

This spec sheet is intended for informational purposes only and while VERSA strives for accuracy, same does not constitute a warranty or guarantee, express or implied, regarding any products or services described herein. VERSA reserves the right to amend its product designs, details, specifications, and other information at any time without prior notice. VERSA also publishes information on its website at [VERSA-Valves.com](https://www.versa-valves.com) and information can be sought by contacting customer service at 201-843-2400 option 3, or emailing to sales@versa-valves.com.