



22 Spring Valley Rd.
Paramus, NJ 07652
(201) 843-2400
sales@versa-valves.com

Valve, 4-Way, Alum, 12VDC

CSG-4222-043-D012

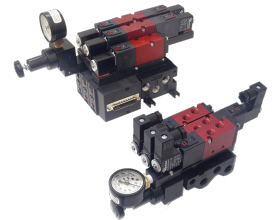
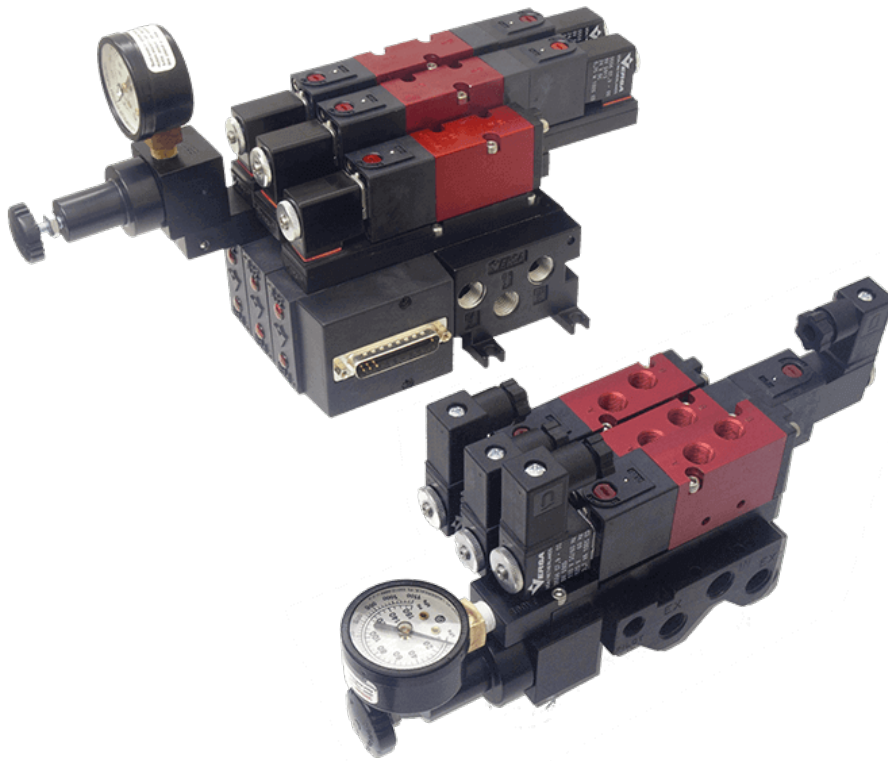
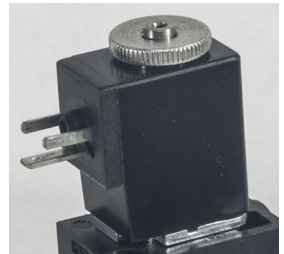
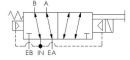


Image for reference only.
May not reflect actual product configuration.

© 2018 Versa Products Co., Inc.



**Image for reference only.
May not reflect actual product configuration.**

© 2018 Versa Products Co., Inc.

Specifications

Actuation	Solenoid-Pilot Spring Return
Function	4-way, 2-pos
Port Size	Body Ported, 1/8" NPT
Valve Pressure Range (PSI)	15-115 psi
Valve Pressure Range (BAR)	1.03-7.93 bar
Primary Flow	0.75 Cv
Media	Air - Inert Gas, Natural Gas
Temperature Range (F)	14°F to 122°F
Temperature Range (C)	-10°C to 50°C
Body & Internal Parts	Aluminum
Weight	0.500000

Solenoid Specifications

Solenoid Description	GP - EN Class
Voltage	12 V DC \pm 10% (D012)
Power	2.9 W
Inrush Current (mA)	255
Holding Current (mA)	255
Resistance Ω	47
Ingress Protection Rating	None
Electrical Protection	Not applicable
Coil Class	Std
Solenoid Housing Material	Engineered Polymer
Solenoid Seal Material	FKM
Solenoid Connection	Molded 3 spade coil, micro-mini (Form C)

This spec sheet is intended for informational purposes only and while VERSA strives for accuracy, same does not constitute a warranty or guarantee, express or implied, regarding any products or services described herein. VERSA reserves the right to amend its product designs, details, specifications, and other information at any time without prior notice. VERSA also publishes information on its website at [VERSA-Valves.com](https://www.versa-valves.com) and information can be sought by contacting customer service at 201-843-2400 option 3, or emailing to sales@versa-valves.com.