



22 Spring Valley Rd.  
Paramus, NJ 07652  
(201) 843-2400  
sales@versa-valves.com

# Valve, 4-Way, Alum, 120V60Hz

## CSG-4222-A120

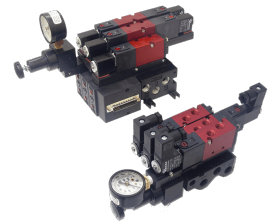
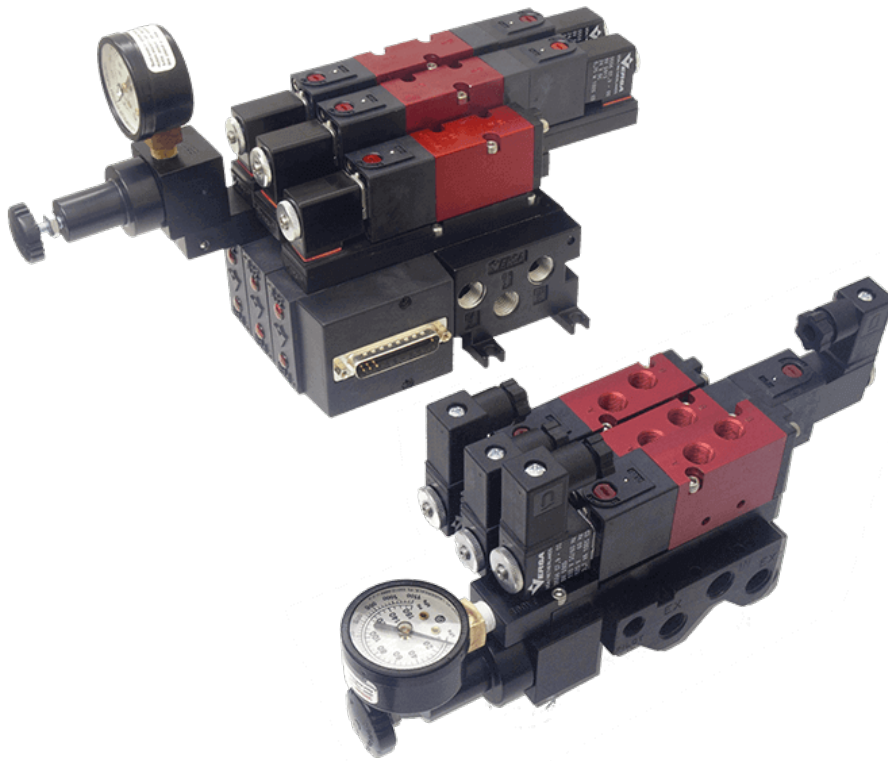
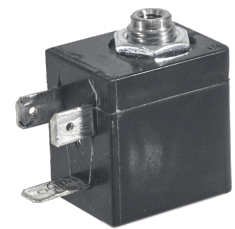
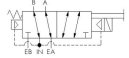


Image for reference only.  
May not reflect actual product configuration.



**Image for reference only.  
May not reflect actual product configuration.**

© 2018 Versa Products Co., Inc.

## Specifications

---

|                            |                                |
|----------------------------|--------------------------------|
| Actuation                  | Solenoid-Pilot   Spring Return |
| Function                   | 4-way, 2-pos                   |
| Port Size                  | Body Ported, 1/8" NPT          |
| Valve Pressure Range (PSI) | 15-115 psi                     |
| Valve Pressure Range (BAR) | 1.03-7.93 bar                  |
| Primary Flow               | 0.75 Cv                        |
| Media                      | Air - Inert Gas, Natural Gas   |
| Temperature Range (F)      | -4°F to 104°F                  |
| Temperature Range (C)      | -20°C to 40°C                  |
| Body & Internal Parts      | Aluminum                       |
| Weight                     | 0.550000                       |

## Solenoid Specifications

---

|                           |                                    |
|---------------------------|------------------------------------|
| Solenoid Description      | GP - EZ Class - AC only            |
| Voltage                   | 120 V 60 Hz $\pm$ 10% (A120)       |
| Power                     | 11.76 VA                           |
| Inrush Current (mA)       | 127                                |
| Holding Current (mA)      | 98                                 |
| Resistance $\Omega$       | 647                                |
| Ingress Protection Rating | NEMA 1,2,3                         |
| Electrical Protection     | Not applicable                     |
| Coil Class                | Std                                |
| Solenoid Housing Material | Engineered Polymer                 |
| Solenoid Seal Material    | FKM                                |
| Solenoid Connection       | Molded 3 spade coil, mini (Form B) |
| Certification             | CSA, UL                            |

This spec sheet is intended for informational purposes only and while VERSA strives for accuracy, same does not constitute a warranty or guarantee, express or implied, regarding any products or services described herein. VERSA reserves the right to amend its product designs, details, specifications, and other information at any time without prior notice. VERSA also publishes information on its website at [VERSA-Valves.com](https://www.versa-valves.com) and information can be sought by contacting customer service at 201-843-2400 option 3, or emailing to [sales@versa-valves.com](mailto:sales@versa-valves.com).