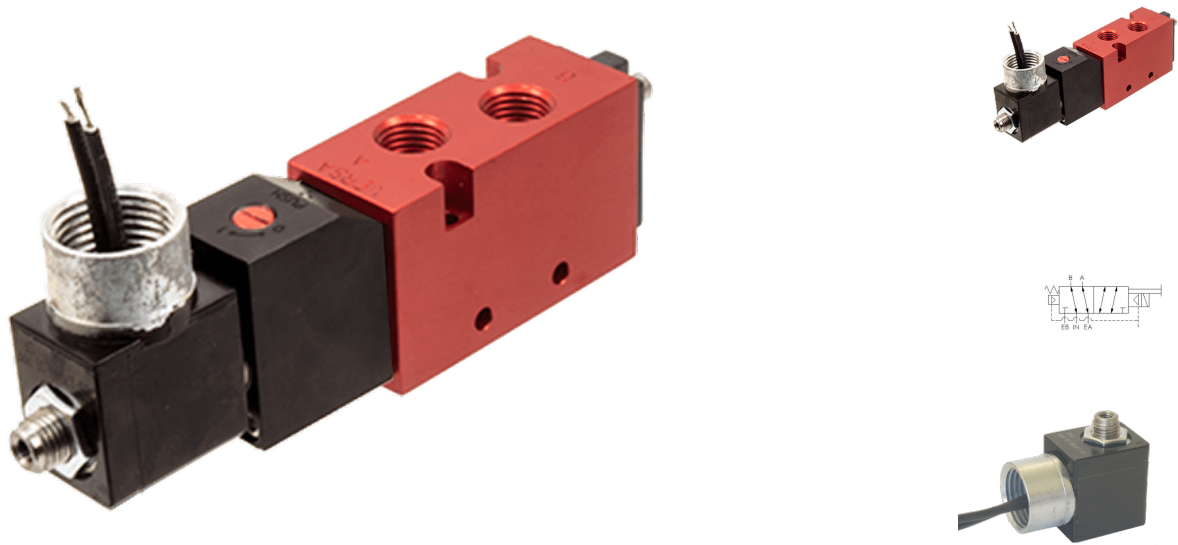




22 Spring Valley Rd.
Paramus, NJ 07652
(201) 843-2400
sales@versa-valves.com

Valve, 4-Way, Alum, 240V60Hz

CSG-4302-228L-A240



Description

C7 Series Directional Control Valve

VERSA C-Series C7 aluminum valves are multi-purpose pilot-operated pneumatic valves consisting of two body types, side ported and manifold

mounted. A balanced, packed spool is the flow-controlling element of each valve. The use of elastomer sealing provides bubble-tight operation and an efficient process due to no waste of leaking air.

Product Features

- Constructed of hard yet lightweight, corrosion-resistant anodized aluminum
- FKM o-ring seals perform reliably with exposure to hydrocarbons or highly corrosive fluids over a broad temperature range: equivalent to Viton®, Fluorel®

Solenoid Features

- Solenoid coil connection: 1/2" NPT female conduit with 24" wires

100% Leak Tested • 10-Year Warranty

Specifications

Actuation	Solenoid-Pilot Spring Return
Function	4-way, 2-pos
Port Size	Body Ported, 1/4" NPT
Valve Pressure Range (PSI)	VAC-150 psi
Valve Pressure Range (BAR)	VAC-10.3 bar
Primary Flow	1.5 Cv
Media	Air - Inert Gas, Natural Gas
Pilot Pressure Range (PSI)	25-115 psi
Pilot Pressure Range (BAR)	1.72-7.93 bar
Temperature Range (F)	-4°F to 104°F
Temperature Range (C)	-20°C to 40°C
Body & Internal Parts	Aluminum
Weight	0.760000

Solenoid Specifications

Solenoid Description	GP - EZ Class - AC only
Voltage	240 V 60 Hz \pm 10% (A240)
Power	11.76 VA
Inrush Current (mA)	63
Holding Current (mA)	49
Resistance Ω	2790
Ingress Protection Rating	NEMA 1,2,3
Electrical Protection	Not applicable
Coil Class	Std
Solenoid Housing Material	Engineered Polymer
Solenoid Seal Material	FKM
Solenoid Connection	1/2" NPT female conduit with 24" wires
Certification	CSA, UL

This spec sheet is intended for informational purposes only and while VERSA strives for accuracy, same does not constitute a warranty or guarantee, express or implied, regarding any products or services described herein. VERSA reserves the right to amend its product designs, details, specifications, and other information at any time without prior notice. VERSA also publishes information on its website at [VERSA-Valves.com](https://www.versa-valves.com) and information can be sought by contacting customer service at 201-843-2400 option 3, or emailing to sales@versa-valves.com.