



22 Spring Valley Rd.  
Paramus, NJ 07652  
(201) 843-2400  
sales@versa-valves.com

# Valve, 4-Way, SST, 24VDC

CSG-4332-316-NE1-HC-D024

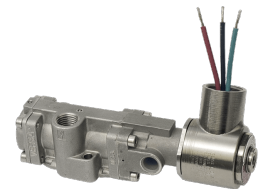
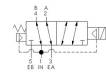


Image for reference only.  
May not reflect actual product configuration.

© 2018 Versa Products Co., Inc.



**Image for reference only.**  
May not reflect actual product configuration.

© 2018 Versa Products Co., Inc.

## Description

### C-316 NAMUR Series Directional Control Valve

The C-316 NAMUR stainless steel valve is available as either a 4-way (for double-acting actuators) or a 3-way (for spring return actuators). When

the 3-way function is utilized, the unused exhaust port becomes an actuator vent where a filter/ muffler can be installed to prevent contaminants from entering the valve or the actuator. The 5-port design allows the user to independently control actuator speed in either open or closed direction by utilizing speed or bleed controls. Double solenoid models are equipped with a detent that maintains the valve in the last shifted position, even in high-vibration applications.

## Product Features

- Constructed of SAE 316L marine grade stainless steel conforming to NACE standard MR-01-75 suitable for direct exposure to sour environments
- FKM o-ring seals perform reliably with exposure to hydrocarbons or highly corrosive fluids over a broad temperature range: equivalent to Viton®, Fluorel®

## Solenoid Features

- Solenoid coil connection: DIN Connector with PG9 cord grip

## 100% Leak Tested • 10-Year Warranty

## Specifications

|                            |   |
|----------------------------|---|
| Actuation                  | Solenoid-Pilot   Spring Return          |
| Function                   | 4-way, 2-pos                            |
| Port Size                  | NAMUR 1/4" NPT                          |
| Valve Pressure Range (PSI) | 25-150 psi                              |
| Valve Pressure Range (BAR) | 1.72-10.3 bar                           |
| Primary Flow               | 1.6 Cv                                  |
| Media                      | Air - Inert Gas, Hydraulic, Natural Gas |
| Temperature Range (F)      | -4°F to 104°F                           |
| Temperature Range (C)      | -20°C to 40°C                           |
| Body & Internal Parts      | 316L Stainless Steel                    |
| Weight                     | 1.460000                                |

## Solenoid Specifications

---

|                           |                               |
|---------------------------|-------------------------------|
| Solenoid Description      | GP - E5 Class HC Option       |
| Voltage                   | 24 V DC $\pm$ 10% (D024)      |
| Power                     | 10.5 W                        |
| Inrush Current (mA)       | 440                           |
| Holding Current (mA)      | 440                           |
| Resistance $\Omega$       | 54.6                          |
| Ingress Protection Rating | IP65                          |
| Electrical Protection     | Not applicable                |
| Area Classification       | General purpose               |
| Coil Class                | Std                           |
| Solenoid Housing Material | Engineered Polymer            |
| Solenoid Seal Material    | FKM                           |
| Solenoid Connection       | Din Connector (PG9 cord grip) |

This spec sheet is intended for informational purposes only and while VERSA strives for accuracy, same does not constitute a warranty or guarantee, express or implied, regarding any products or services described herein. VERSA reserves the right to amend its product designs, details, specifications, and other information at any time without prior notice. VERSA also publishes information on its website at [VERSA-Valves.com](https://www.versa-valves.com) and information can be sought by contacting customer service at 201-843-2400 option 3, or emailing to [sales@versa-valves.com](mailto:sales@versa-valves.com).