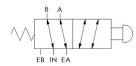
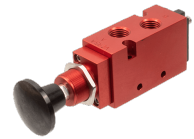
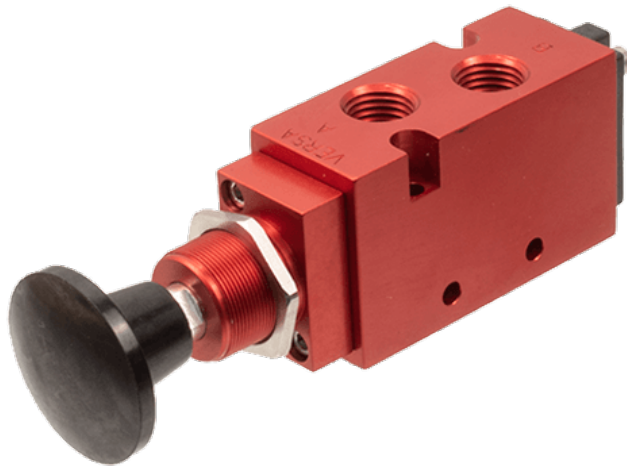




22 Spring Valley Rd.  
Paramus, NJ 07652  
(201) 843-2400  
sales@versa-valves.com

# Valve, 4-Way, Alum

CSI-4302-S-44



## Description

### C7 Series Directional Control Valve

VERSA C-Series C7 aluminum valves are multi-purpose pilot-operated pneumatic valves consisting of two body types, side ported and manifold

mounted. A balanced, packed spool is the flow-controlling element of each valve. The use of elastomer sealing provides bubble-tight operation and an efficient process due to no waste of leaking air.

## Product Features

- Constructed of hard yet lightweight, corrosion-resistant anodized aluminum
- Low-temperature Buna o-ring seals for low-temperature applications down to -40°F

## 100% Leak Tested • 10-Year Warranty

## Specifications

Actuation	Palm Button   Spring Return
Function	4-way, 2-pos
Port Size	Body Ported, 1/4" NPT
Valve Pressure Range (PSI)	VAC-115 psi
Valve Pressure Range (BAR)	VAC-7.93 bar
Primary Flow	1.5 Cv
Media	Air - Inert Gas
Temperature Range (F)	-20°F to 200°F
Temperature Range (C)	-29°C to 93°C
Body & Internal Parts	Aluminum
Weight	0.440000

This spec sheet is intended for informational purposes only and while VERSA strives for accuracy, same does not constitute a warranty or guarantee, express or implied, regarding any products or services described herein. VERSA reserves the right to amend its product designs, details, specifications, and other information at any time without prior notice. VERSA also publishes information on its website at [VERSA-Valves.com](https://www.versa-valves.com) and information can be sought by contacting customer service at 201-843-2400 option 3, or emailing to [sales@versa-valves.com](mailto:sales@versa-valves.com).