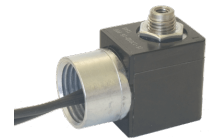
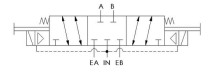
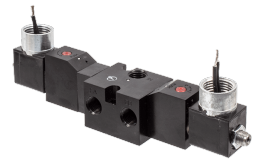
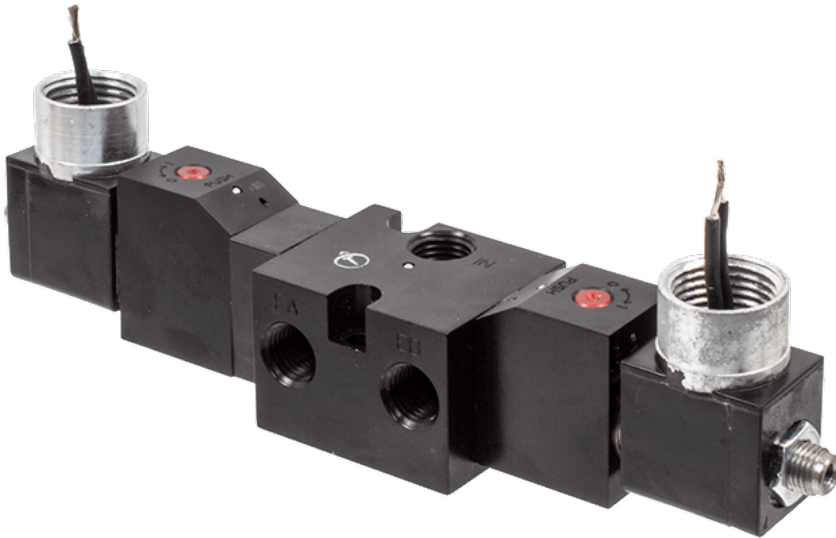




22 Spring Valley Rd.
Paramus, NJ 07652
(201) 843-2400
sales@versa-valves.com

Valve, 4-Way, Alum, 24VDC

CXX-4233-NB1-228L-D024



Specifications

| | |
|----------------------------|-------------------------------------|
| Actuation | Double Solenoid-Pilot Spring Center |
| Function | 4-way, 3-pos, Blocked Center |
| Port Size | NAMUR 1/4" NPT |
| Valve Pressure Range (PSI) | 15-150 psi |
| Valve Pressure Range (BAR) | 1.03-10.3 bar |
| Primary Flow | 0.75 Cv |
| Media | Air - Inert Gas, Natural Gas |
| Temperature Range (F) | -4°F to 104°F |
| Temperature Range (C) | -20°C to 40°C |
| Body & Internal Parts | Aluminum |
| Weight | 1.190000 |

Solenoid Specifications

| | |
|---------------------------|--|
| Solenoid Description | GP - EZ Class - DC only |
| Voltage | 24 V DC \pm 10% (D024) |
| Power | 10.5 W |
| Inrush Current (mA) | 440 |
| Holding Current (mA) | 440 |
| Resistance Ω | 54.6 |
| Ingress Protection Rating | NEMA 1,2,3 |
| Electrical Protection | Not applicable |
| Coil Class | Std |
| Solenoid Housing Material | Engineered Polymer |
| Solenoid Seal Material | Buna |
| Solenoid Connection | 1/2" NPT female conduit with 24" wires |

This spec sheet is intended for informational purposes only and while VERSA strives for accuracy, same does not constitute a warranty or guarantee, express or implied, regarding any products or services described herein. VERSA reserves the right to amend its product designs, details, specifications, and other information at any time without prior notice. VERSA also publishes information on its website at [VERSA-Valves.com](https://www.versa-valves.com) and information can be sought by contacting customer service at 201-843-2400 option 3, or emailing to sales@versa-valves.com.