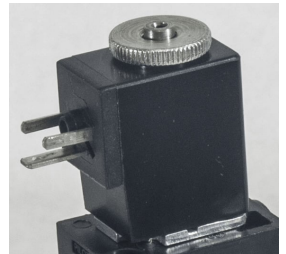
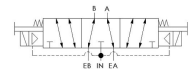
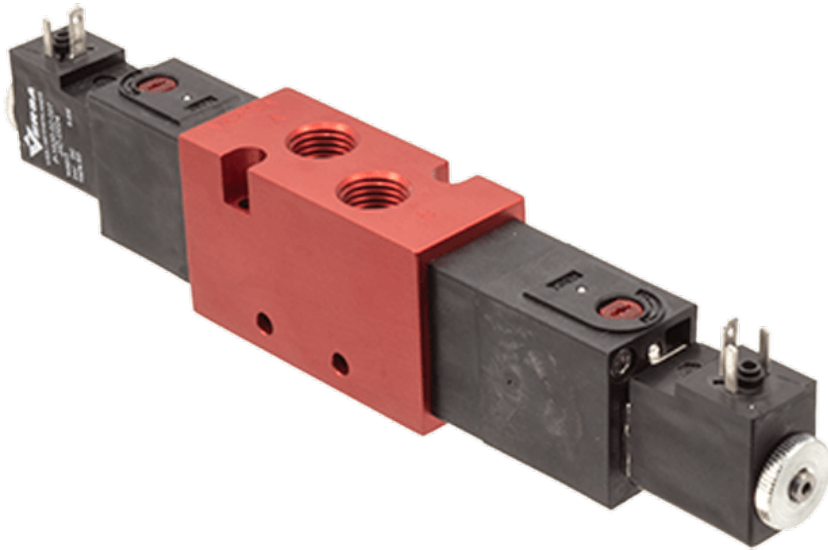




22 Spring Valley Rd.  
Paramus, NJ 07652  
(201) 843-2400  
sales@versa-valves.com

# Valve, 4-Way, Alum, 24VDC

CXX-4324-027-D024



## Specifications

---

Actuation	Double Solenoid-Pilot Spring Center
Function	4-way, 3-pos, Cylinder ports open to exhaust
Port Size	Body Ported, 1/4" NPT
Valve Pressure Range (PSI)	25-115 psi
Valve Pressure Range (BAR)	1.72-7.93 bar
Primary Flow	1.5 Cv
Media	Air - Inert Gas, Natural Gas
Temperature Range (F)	14°F to 122°F
Temperature Range (C)	-10°C to 50°C
Body & Internal Parts	Aluminum
Weight	1.000000

## Solenoid Specifications

---

Solenoid Description	GP - EN Class
Voltage	24 V DC $\pm$ 10% (D024)
Power	2.9 W
Inrush Current (mA)	121
Holding Current (mA)	121
Resistance $\Omega$	193
Ingress Protection Rating	None
Electrical Protection	Not applicable
Coil Class	Std
Solenoid Housing Material	Engineered Polymer
Solenoid Seal Material	FKM
Solenoid Connection	Molded 3 spade coil, micro-mini (Form C)

This spec sheet is intended for informational purposes only and while VERSA strives for accuracy, same does not constitute a warranty or guarantee, express or implied, regarding any products or services described herein. VERSA reserves the right to amend its product designs, details, specifications, and other information at any time without prior notice. VERSA also publishes information on its website at [VERSA-Valves.com](https://www.versa-valves.com) and information can be sought by contacting customer service at 201-843-2400 option 3, or emailing to [sales@versa-valves.com](mailto:sales@versa-valves.com).