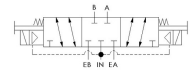
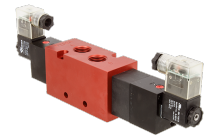
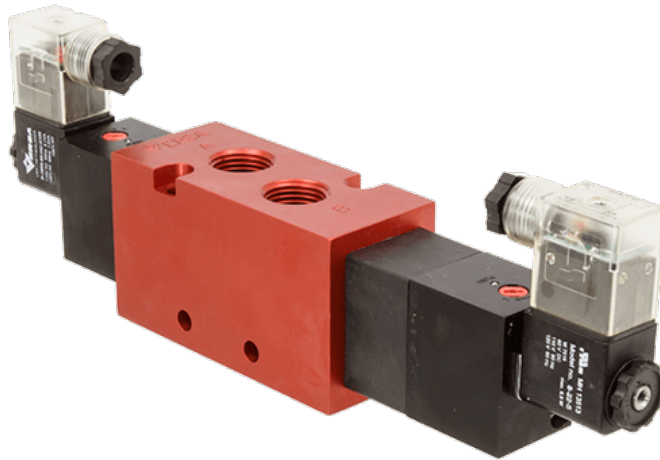




22 Spring Valley Rd.  
Paramus, NJ 07652  
(201) 843-2400  
sales@versa-valves.com

# Valve, 4-Way, Alum, 24VDC

CXX-4523-HCL-D024



## Description

### C9 Series Directional Control Valve

VERSA C-Series C9 aluminum valves are multi-purpose pilot-operated pneumatic valves consisting of two body types, side ported and manifold

mounted. A balanced, packed spool is the flow-controlling element of each valve. The use of elastomer sealing provides bubble-tight operation and an efficient process due to no waste of leaking air.

## Product Features

- Constructed of hard yet lightweight, corrosion-resistant anodized aluminum
- FKM o-ring seals perform reliably with exposure to hydrocarbons or highly corrosive fluids over a broad temperature range: equivalent to Viton®, Fluorel®

## Solenoid Features

- Solenoid coil connection: DIN Connector with PG9 cord grip

## 100% Leak Tested • 10-Year Warranty

## Specifications

|                            |                                     |
|----------------------------|-------------------------------------|
| Actuation                  | Double Solenoid-Pilot Spring Center |
| Function                   | 4-way, 3-pos, Blocked Center        |
| Port Size                  | Body Ported, 1/2" NPT               |
| Valve Pressure Range (PSI) | 30-150 psi                          |
| Valve Pressure Range (BAR) | 2.07-10.3 bar                       |
| Primary Flow               | 4.1 Cv                              |
| Media                      | Air - Inert Gas, Natural Gas        |
| Temperature Range (F)      | -4°F to 122°F                       |
| Temperature Range (C)      | -20°C to 50°C                       |
| Body & Internal Parts      | Aluminum                            |
| Weight                     | 2.310000                            |

## Solenoid Specifications

---

|                           |                               |
|---------------------------|-------------------------------|
| Solenoid Description      | GP - EN8 Class - 22mm         |
| Voltage                   | 24 V DC $\pm$ 10% (D024)      |
| Power                     | 5.9 W                         |
| Inrush Current (mA)       | 245                           |
| Holding Current (mA)      | 245                           |
| Resistance $\Omega$       | 98                            |
| Ingress Protection Rating | IP65                          |
| Electrical Protection     | Not applicable                |
| Area Classification       | General purpose               |
| Coil Class                | Std                           |
| Solenoid Housing Material | Engineered Polymer            |
| Solenoid Seal Material    | FKM                           |
| Solenoid Connection       | Din Connector (PG9 cord grip) |
| Certification             | cRUus                         |

This spec sheet is intended for informational purposes only and while VERSA strives for accuracy, same does not constitute a warranty or guarantee, express or implied, regarding any products or services described herein. VERSA reserves the right to amend its product designs, details, specifications, and other information at any time without prior notice. VERSA also publishes information on its website at [VERSA-Valves.com](https://www.versa-valves.com) and information can be sought by contacting customer service at 201-843-2400 option 3, or emailing to [sales@versa-valves.com](mailto:sales@versa-valves.com).