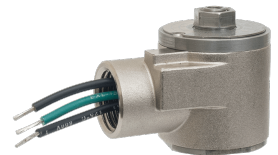
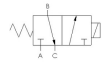




22 Spring Valley Rd.  
Paramus, NJ 07652  
(201) 843-2400  
sales@versa-valves.com

# Valve, 3-Way, SST, 12VDC

E4SM-3301-23-XV9-D012



## Specifications

---

|                            |  |
|----------------------------|--|
| Actuation                  | Direct Acting Solenoid \ Spring Return |
| Function                   | 3-way, 2-pos, NC                       |
| Port Size                  | Body Ported, 1/4" NPT                  |
| Valve Pressure Range (PSI) | 0-200 psi                              |
| Valve Pressure Range (BAR) | 0-13.8 bar                             |
| Primary Flow               | 0.022 Cv                               |
| Primary Flow Description   | A to "B"                               |
| Secondary Flow             | 0.060 Cv                               |
| Secondary Flow Description | B to "C"                               |
| Media                      | Air - Inert Gas, Natural Gas           |
| Temperature Range (F)      | -4°F to 189°F                          |
| Temperature Range (C)      | -20°C to 87°C                          |
| Body & Internal Parts      | Stainless Steel                        |
| Weight                     | 1.250000                               |

## Solenoid Specifications

---

|                           |   |
|---------------------------|---|
| Solenoid Description      | Hazloc - E4 Class XV Option                   |
| Voltage                   | 12 V DC $\pm$ 10% (D012)                      |
| Power                     | 1.8 W   |
| Inrush Current (mA)       | 150   |
| Holding Current (mA)      | 150   |
| Resistance $\Omega$       | 80  |
| Ingress Protection Rating | IP66 / 67 / 68, NEMA 4X & 6P                  |
| Electrical Protection     | Not applicable                                |
| Area Classification       | Cl I, Grps B,C,D - Cl II, Grps E,F,G - Cl III |
| Coil Class                | H   |
| Zone                      | 1   |
| T Rating (Gas)            | 4   |
| T Rating (Dust)           | 135   |
| Solenoid Housing Material | Stainless Steel - Plated                      |
| Solenoid Seal Material    | FKM   |
| Solenoid Connection       | 1/2" NPT female conduit with 24" wires        |
| Certification             | cCSAus  |

This spec sheet is intended for informational purposes only and while VERSA strives for accuracy, same does not constitute a warranty or guarantee, express or implied, regarding any products or services described herein. VERSA reserves the right to amend its product designs, details, specifications, and other information at any time without prior notice. VERSA also publishes information on its website at [VERSA-Valves.com](https://www.versa-valves.com) and information can be sought by contacting customer service at 201-843-2400 option 3, or emailing to [sales@versa-valves.com](mailto:sales@versa-valves.com).