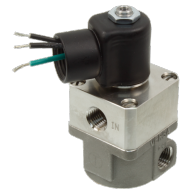
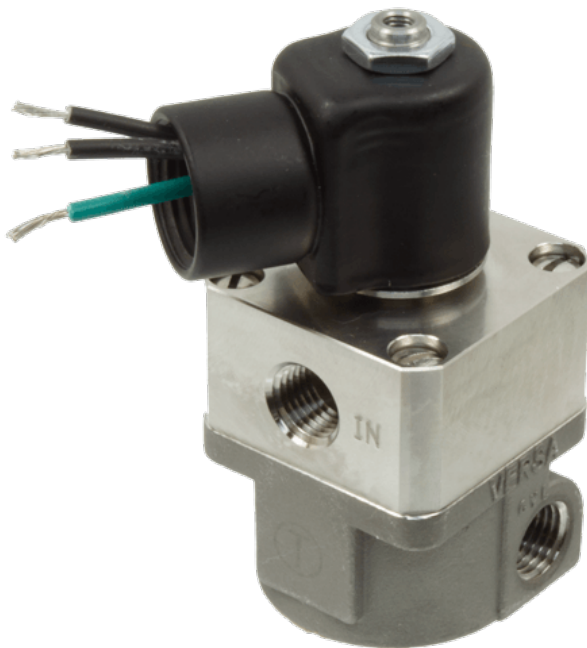




22 Spring Valley Rd.
Paramus, NJ 07652
(201) 843-2400
sales@versa-valves.com

Electric Quick Exhaust, SST, 240V60Hz

E5QE-30304-316-A240



Description

E5 Series Electrical Quick Exhaust Valve

The VERSA E5 Series Electrical Quick Exhaust Valve is a three-way, NC, 3/2 valve with an extra large exhaust orifice to provide extra fast movement of the cylinder rod or to rapidly exhaust systems. When the solenoid is energized, the outlet port is connected to the inlet port, and the exhaust port is closed. When the solenoid is de-energized, the inlet port is closed, and the outlet port is connected to the exhaust port, providing rapid evacuation of the system.

Product Features

- Constructed of SAE 316L marine grade stainless steel conforming to NACE standard MR-01-75 suitable for direct exposure to sour environments
- FKM o-ring seals perform reliably with exposure to hydrocarbons or highly corrosive fluids over a broad temperature range: equivalent to Viton®, Fluorel®

Solenoid Features

- Solenoid coil connection: 1/2" NPT female conduit with 24" wires

100% Leak Tested • 10-Year Warranty

Specifications

Actuation	Direct Acting Solenoid \ Spring Return
Function	3-way, 2-pos, NC
Port Size	Body Ported, 1/4" NPT
Valve Pressure Range (PSI)	5-150 psi
Valve Pressure Range (BAR)	0.34-10.3 bar
Primary Flow	3.3 Cv
Primary Flow Description	Exhaust
Secondary Flow	0.060 Cv
Secondary Flow Description	Inlet
Media	Air - Inert Gas, Natural Gas
Temperature Range (F)	-4°F to 158°F
Temperature Range (C)	-20°C to 70°C
Body & Internal Parts	316L Stainless Steel
Weight	1.630000

Solenoid Specifications

Solenoid Description	GP - E5 Class
Voltage	240 V 60 Hz ±10% (A240)
Power	9 VA
Inrush Current (mA)	63
Holding Current (mA)	38
Resistance Ω	2000
Ingress Protection Rating	NEMA 1,2,3
Electrical Protection	Not applicable
Area Classification	General purpose
Coil Class	Std
Solenoid Housing Material	Steel - Painted
Solenoid Seal Material	FKM
Solenoid Connection	1/2" NPT female conduit with 24" wires
Certification	CSA, UL

This spec sheet is intended for informational purposes only and while VERSA strives for accuracy, same does not constitute a warranty or guarantee, express or implied, regarding any products or services described herein. VERSA reserves the right to amend its product designs, details, specifications, and other information at any time without prior notice. VERSA also publishes information on its website at [VERSA-Valves.com](https://www.versa-valves.com) and information can be sought by contacting customer service at 201-843-2400 option 3, or emailing to sales@versa-valves.com.