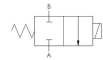




22 Spring Valley Rd.  
Paramus, NJ 07652  
(201) 843-2400  
sales@versa-valves.com

# Valve, 2-Way, SST, 24VDC

ESM-2301-60-HC-D024



## Description

### E Series Directional Control Valve

The VERSA stainless steel E Series offers full-size side-ported valves that are direct solenoid actuated and individually mounted. 1/8" NPT or 1/4"

NPT ports are provided in the valve body. Also available are manifold mounting versions that can be mounted on a manifold that can have 1 to 10 valve stations.

## Product Features

- Constructed of stainless steel
- Buna-N/nitrile rubber o-ring seals perform reliably with oil, fuel, and other chemicals over broad temperature range

## Solenoid Features

- Solenoid coil connection: DIN Connector with PG9 cord grip

## 100% Leak Tested • 10-Year Warranty

## Specifications

Actuation	Direct Acting Solenoid \ Spring Return
Function	2-way, 2-pos, NC
Port Size	Body Ported, 1/4" NPT
Valve Pressure Range (PSI)	0-150 psi
Valve Pressure Range (BAR)	0-10.3 bar
Primary Flow	0.21 Cv
Media	Air - Inert Gas, Natural Gas
Temperature Range (F)	-4°F to 104°F
Temperature Range (C)	-20°C to 40°C
Body & Internal Parts	Stainless Steel
Weight	0.970000

## Solenoid Specifications

---

Solenoid Description	GP - E Class HC Option
Voltage	24 V DC $\pm$ 10% (D024)
Power	10 W
Inrush Current (mA)	429
Holding Current (mA)	429
Resistance $\Omega$	56
Ingress Protection Rating	IP65
Electrical Protection	Not applicable
Area Classification	General purpose
Coil Class	Std
Solenoid Housing Material	Engineered Polymer
Solenoid Seal Material	Buna
Solenoid Connection	Din Connector (PG9 cord grip)

This spec sheet is intended for informational purposes only and while VERSA strives for accuracy, same does not constitute a warranty or guarantee, express or implied, regarding any products or services described herein. VERSA reserves the right to amend its product designs, details, specifications, and other information at any time without prior notice. VERSA also publishes information on its website at [VERSA-Valves.com](https://www.versa-valves.com) and information can be sought by contacting customer service at 201-843-2400 option 3, or emailing to [sales@versa-valves.com](mailto:sales@versa-valves.com).