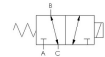




22 Spring Valley Rd.
Paramus, NJ 07652
(201) 843-2400
sales@versa-valves.com

Valve, Selector, SST, 220V50Hz

ESM-8302-66-H-E220



Description

E Series Directional Control Valve

The VERSA stainless steel E Series offers full-size side-ported valves that are direct solenoid actuated and individually mounted. 1/8" NPT or 1/4"

NPT ports are provided in the valve body. Also available are manifold mounting versions that can be mounted on a manifold that can have 1 to 10 valve stations.

Product Features

- Constructed of stainless steel
- Buna-N/nitrile rubber o-ring seals perform reliably with oil, fuel, and other chemicals over broad temperature range

Solenoid Features

- Solenoid coil connection: 1/2" NPT female conduit with 24" wires

100% Leak Tested • 10-Year Warranty

Specifications

| | |
|----------------------------|---|
| Actuation | Direct Acting Solenoid \ Spring Return |
| Function | Universal Flow |
| Port Size | Body Ported, 1/4" NPT |
| Valve Pressure Range (PSI) | 0-75 psi |
| Valve Pressure Range (BAR) | 0-5.17 bar |
| Primary Flow | 0.21 Cv |
| Primary Flow Description | Port A <--> Port B |
| Secondary Flow | 0.21 Cv |
| Secondary Flow Description | Port B <--> Port C |
| Media | Air - Inert Gas, Hydraulic, Natural Gas |
| Temperature Range (F) | -40°F to 104°F |
| Temperature Range (C) | -40°C to 40°C |
| Body & Internal Parts | Stainless Steel |
| Weight | 1.200000 |

Solenoid Specifications

| | |
|---------------------------|--|
| Solenoid Description | GP - E Class |
| Voltage | 220 V 50 Hz ±10% (E220) |
| Power | 16.1 VA |
| Inrush Current (mA) | 115 |
| Holding Current (mA) | 73 |
| Resistance Ω | 661 |
| Ingress Protection Rating | NEMA 1,2,3 |
| Electrical Protection | Not applicable |
| Area Classification | General purpose |
| Coil Class | Std |
| Solenoid Housing Material | Steel - Plated |
| Solenoid Seal Material | Buna |
| Solenoid Connection | 1/2" NPT female conduit with 24" wires |
| Certification | CSA, UL |

This spec sheet is intended for informational purposes only and while VERSA strives for accuracy, same does not constitute a warranty or guarantee, express or implied, regarding any products or services described herein. VERSA reserves the right to amend its product designs, details, specifications, and other information at any time without prior notice. VERSA also publishes information on its website at [VERSA-Valves.com](https://www.versa-valves.com) and information can be sought by contacting customer service at 201-843-2400 option 3, or emailing to sales@versa-valves.com.