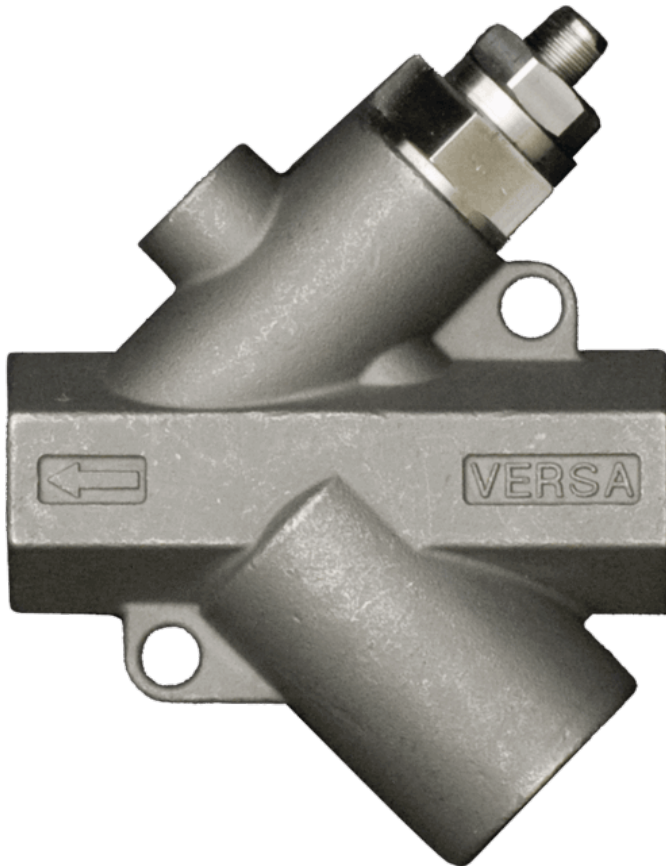




22 Spring Valley Rd.
Paramus, NJ 07652
(201) 843-2400
sales@versa-valves.com

Flow Control (1/4" NPT), SST

FCV-3-316-44



Specifications

Actuation	Adjustable stem w/lock nut
Port Size	Body Ported, 1/4" NPT
Valve Pressure Range (PSI)	0-400 psi
Valve Pressure Range (BAR)	0-27.6 bar
Primary Flow	2.0 Cv
Primary Flow Description	Metered Flow 0 to 2.0 Cv
Media	Air - Inert Gas, Hydraulic, Natural Gas
Temperature Range (F)	-55°F to 200°F
Temperature Range (C)	-48°C to 93°C
Body & Internal Parts	316L Stainless Steel
Weight	0.810000

This spec sheet is intended for informational purposes only and while VERSA strives for accuracy, same does not constitute a warranty or guarantee, express or implied, regarding any products or services described herein. VERSA reserves the right to amend its product designs, details, specifications, and other information at any time without prior notice. VERSA also publishes information on its website at [VERSA-Valves.com](https://www.versa-valves.com) and information can be sought by contacting customer service at 201-843-2400 option 3, or emailing to sales@versa-valves.com.