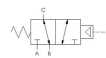




22 Spring Valley Rd.
Paramus, NJ 07652
(201) 843-2400
sales@versa-valves.com

Valve, Limit, Alum

LSP-3200



Description

L Series Directional Control Valve

The versatile design of the L-Mini valve allows it to directly replace electrical limit switches, enabling you to make your system 100% air

controlled. The valve can endure harsh, dirty, humid environments that would destroy electrical switches. Also, the hazard of fire or explosion and the need for bulky conduit and enclosures are eliminated.

Product Features

- Constructed of hard yet lightweight, corrosion-resistant anodized aluminum
- Buna-N/nitrile rubber o-ring seals perform reliably with oil, fuel, and other chemicals over broad temperature range

100% Leak Tested • 10-Year Warranty

Specifications

Actuation	Pilot Spring Return
Function	3-way, 2-pos, NC
Port Size	Body Ported, 1/8" NPT
Valve Pressure Range (PSI)	VAC-200 psi
Valve Pressure Range (BAR)	VAC-13.8 bar
Primary Flow	0.40 Cv
Media	Air - Inert Gas
Pilot Pressure Range (PSI)	15-200 psi
Pilot Pressure Range (BAR)	1.03-13.8 bar
Temperature Range (F)	5°F to 203°F
Temperature Range (C)	-15°C to 95°C
Body & Internal Parts	Aluminum
Weight	0.150000

This spec sheet is intended for informational purposes only and while VERSA strives for accuracy, same does not constitute a warranty or guarantee, express or implied, regarding any products or services described herein. VERSA reserves the right to amend its product designs, details, specifications, and other information at any time without prior notice. VERSA also publishes information on its website at [VERSA-Valves.com](https://www.versa-valves.com) and information can be sought by contacting customer service at 201-843-2400 option 3, or emailing to sales@versa-valves.com.