



22 Spring Valley Rd.
Paramus, NJ 07652
(201) 843-2400
sales@versa-valves.com

Relief Valve (1/4" NPT), SST

RV-3-316-073

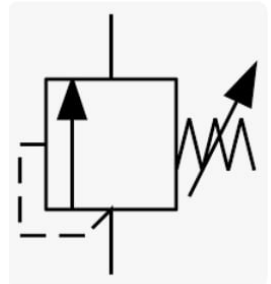
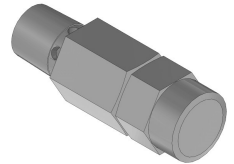


Image for reference only.
May not reflect actual product configuration.

© 2018 Versa Products Co., Inc.

Specifications

Actuation	Relief pressure set at factory
Port Size	Body Ported, 1/4" NPT
Valve Pressure Range (PSI)	73 psi
Valve Pressure Range (BAR)	5.03 bar
Primary Flow	1.3 Cv
Media	Air - Inert Gas, Natural Gas
Temperature Range (F)	5°F to 300°F
Temperature Range (C)	-15°C to 149°C
Body & Internal Parts	316 Stainless Steel
Weight	0.190000

This spec sheet is intended for informational purposes only and while VERSA strives for accuracy, same does not constitute a warranty or guarantee, express or implied, regarding any products or services described herein. VERSA reserves the right to amend its product designs, details, specifications, and other information at any time without prior notice. VERSA also publishes information on its website at [VERSA-Valves.com](https://www.versa-valves.com) and information can be sought by contacting customer service at 201-843-2400 option 3, or emailing to sales@versa-valves.com.