



22 Spring Valley Rd.
Paramus, NJ 07652
(201) 843-2400
sales@versa-valves.com

Relief Valve (1/2" NPT), SST

RV-5-316-015

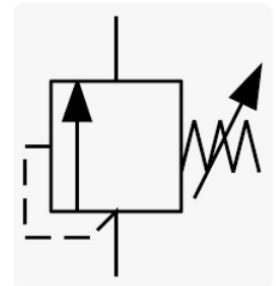


Image for reference only.
May not reflect actual product configuration.

© 2018 Versa Products Co., Inc.

Description

Stainless Steel Pressure Relief Valve

The VERSA stainless steel Pressure Relief Valve is designed to withstand challenging conditions in pneumatic applications. The relief pressures

are factory set and tested in 5 psi (0.34 bar) increments to meet your application requirements.

Product Features

- Constructed of SAE 316 stainless steel conforming to NACE standard MR-01-75 suitable for direct exposure to sour environments
- FKM o-ring seals perform reliably with exposure to hydrocarbons or highly corrosive fluids over a broad temperature range: equivalent to Viton®, Fluorel®

100% Leak Tested • 10-Year Warranty

Specifications

Actuation	Relief pressure set at factory
Port Size	Body Ported, 1/2" NPT
Valve Pressure Range (PSI)	15 psi
Valve Pressure Range (BAR)	1.03 bar
Primary Flow	5.5 Cv
Media	Air - Inert Gas, Natural Gas
Temperature Range (F)	5°F to 300°F
Temperature Range (C)	-15°C to 149°C
Body & Internal Parts	316 Stainless Steel
Weight	0.440000

This spec sheet is intended for informational purposes only and while VERSA strives for accuracy, same does not constitute a warranty or guarantee, express or implied, regarding any products or services described herein. VERSA reserves the right to amend its product designs, details, specifications, and other information at any time without prior notice. VERSA also publishes information on its website at [VERSA-Valves.com](https://www.versa-valves.com) and information can be sought by contacting customer service at 201-843-2400 option 3, or emailing to sales@versa-valves.com.