

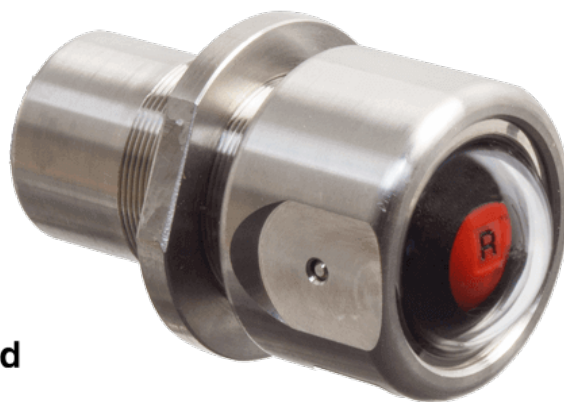
Status indicator, SST, red - pressurized, black - depressurized

SI-2-316-403BR

Depressurized



Pressurized



Specifications

Actuation	Automatic shift with pressure loss
Port Size	Body Ported, 1/8" NPT
Valve Pressure Range (PSI)	8-200 psi
Valve Pressure Range (BAR)	0.55-13.8 bar
Media	Air - Inert Gas, Natural Gas
Temperature Range (F)	-9°F to 203°F
Temperature Range (C)	-23°C to 95°C
Body & Internal Parts	316 Stainless Steel
Weight	0.520000

This spec sheet is intended for informational purposes only and while VERSA strives for accuracy, same does not constitute a warranty or guarantee, express or implied, regarding any products or services described herein. VERSA reserves the right to amend its product designs, details, specifications, and other information at any time without prior notice. VERSA also publishes information on its website at [VERSA-Valves.com](https://www.versa-valves.com) and information can be sought by contacting customer service at 201-843-2400 option 3, or emailing to sales@versa-valves.com.