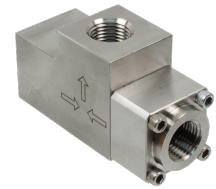
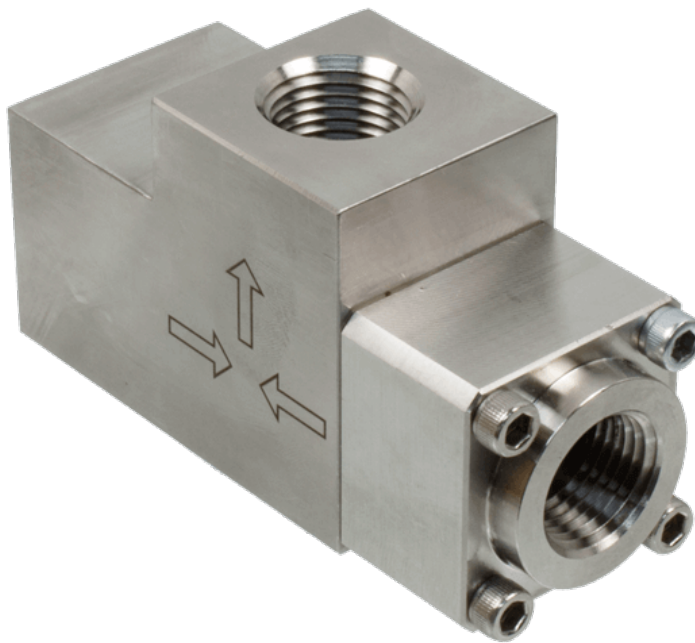




22 Spring Valley Rd.  
Paramus, NJ 07652  
(201) 843-2400  
sales@versa-valves.com

# Low Pressure Shuttle Valve

SVLP-5-316BS



## Description

### Stainless Steel Low Pressure Shuttle Valve

The VERSA low-pressure Shuttle Valves are constructed of 316 stainless steel with resilient seals providing tight shut-off. Shuttle Valves are 3/2

valves primarily used to charge and discharge a pressure line or chamber from two - or more - sources. When a pressure signal enters the port blocked by the shuttle, it will cause the shuttle to shift toward the lower pressure port.

## Product Features

- Constructed of SAE 316 stainless steel conforming to NACE standard MR-01-75 suitable for direct exposure to sour environments
- FKM o-ring seals perform reliably with exposure to hydrocarbons or highly corrosive fluids over a broad temperature range: equivalent to Viton®, Fluorel®

## 100% Leak Tested • 10-Year Warranty

## Specifications

Actuation	Automatic shift to lower pressure inlet source
Function	Selector (2 inlets-1 outlet), 2-pos [8-way]
Port Size	Body Ported, 1/2" NPT
Valve Pressure Range (PSI)	20-200 psi
Valve Pressure Range (BAR)	1.38-13.8 bar
Primary Flow	2.0 Cv
Media	Air - Inert Gas, Hydraulic, Natural Gas
Temperature Range (F)	5°F to 200°F
Temperature Range (C)	-15°C to 93°C
Body & Internal Parts	316 Stainless Steel
Weight	2.310000

This spec sheet is intended for informational purposes only and while VERSA strives for accuracy, same does not constitute a warranty or guarantee, express or implied, regarding any products or services described herein. VERSA reserves the right to amend its product designs, details, specifications, and other information at any time without prior notice. VERSA also publishes information on its website at [VERSA-Valves.com](https://www.versa-valves.com) and information can be sought by contacting customer service at 201-843-2400 option 3, or emailing to [sales@versa-valves.com](mailto:sales@versa-valves.com).