



22 Spring Valley Rd.  
Paramus, NJ 07652  
(201) 843-2400  
sales@versa-valves.com

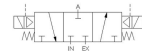
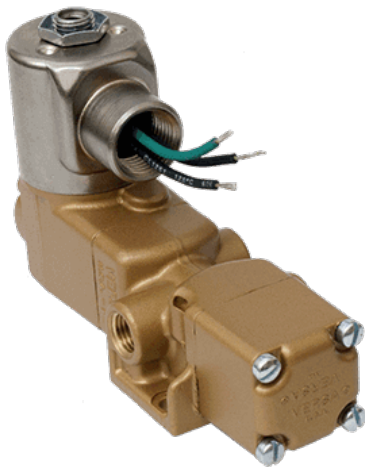
# Valve, 3-Way, Brass, 120V60Hz

## TXX-3403-H-S-A120



Image for reference only.  
May not reflect actual product configuration.

© 2018 Versa Products Co., Inc.



**Image for reference only.  
May not reflect actual product configuration.**

© 2018 Versa Products Co., Inc.

## Specifications

---

|                            |                                     |
|----------------------------|-------------------------------------|
| Actuation                  | Double Solenoid-Pilot Spring Center |
| Function                   | 3-way, 3-pos, Blocked Center        |
| Port Size                  | Body Ported, 3/8" NPT               |
| Valve Pressure Range (PSI) | 0-500 psi                           |
| Valve Pressure Range (BAR) | 0-34.5 bar                          |
| Primary Flow               | 3.4 Cv                              |
| Media                      | Hydraulic                           |
| Pilot Pressure Range (PSI) | 55-175 psi                          |
| Pilot Pressure Range (BAR) | 3.79-12.1 bar                       |
| Temperature Range (F)      | -10°F to 104°F                      |
| Temperature Range (C)      | -23°C to 40°C                       |
| Body & Internal Parts      | Brass                               |
| Weight                     | 7.280000                            |

## Solenoid Specifications

---

|                           |  |
|---------------------------|--|
| Solenoid Description      | GP - E Class                           |
| Voltage                   | 120 V 60 Hz ±10% (A120)                |
| Power                     | 19.6 VA                                |
| Inrush Current (mA)       | 259                                    |
| Holding Current (mA)      | 163                                    |
| Resistance Ω              | 146                                    |
| Ingress Protection Rating | NEMA 1,2,3                             |
| Electrical Protection     | Not applicable                         |
| Area Classification       | General purpose                        |
| Coil Class                | Std                                    |
| Solenoid Housing Material | Steel - Plated                         |
| Solenoid Seal Material    | Buna                                   |
| Solenoid Connection       | 1/2" NPT female conduit with 24" wires |
| Certification             | CSA, UL                                |

This spec sheet is intended for informational purposes only and while VERSA strives for accuracy, same does not constitute a warranty or guarantee, express or implied, regarding any products or services described herein. VERSA reserves the right to amend its product designs, details, specifications, and other information at any time without prior notice. VERSA also publishes information on its website at [VERSA-Valves.com](https://www.versa-valves.com) and information can be sought by contacting customer service at 201-843-2400 option 3, or emailing to [sales@versa-valves.com](mailto:sales@versa-valves.com).