

V-316 POWER SHIFT PILOT



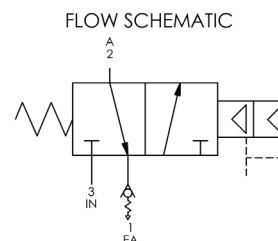
The VERSA V-316 Series Pilot Operated Valve with a double pilot piston is designed to increase the shifting force while reducing the minimum pilot pressure. When paired with the Super Strong Spring, this option also significantly increases closing shifting force for critical applications. These valves are ideal for a wide range of applications that experience challenging environments where efficiency and reliability are essential.

SPECIFICATIONS

Description		V-316 Power Shift Pilot
Function		3-way, 2-position, Normally Closed
Body		Body Ported ½" NPT
Temperature Rating		-4°F to 300°F (-20°C to 149°C)
Pressure Range		VAC-200 psi (VAC-13.8 bar)
Flow		5.5 Cv
Media		Air - Inert Gas Natural Gas
Pilot Range		45-200 psi (3.10-13.8 bar)
Materials of Construction	Body	Stainless Steel - Type 316L
	Seals, Valve Proper	FKM
Weight		3.88 lb (1.76 kg)



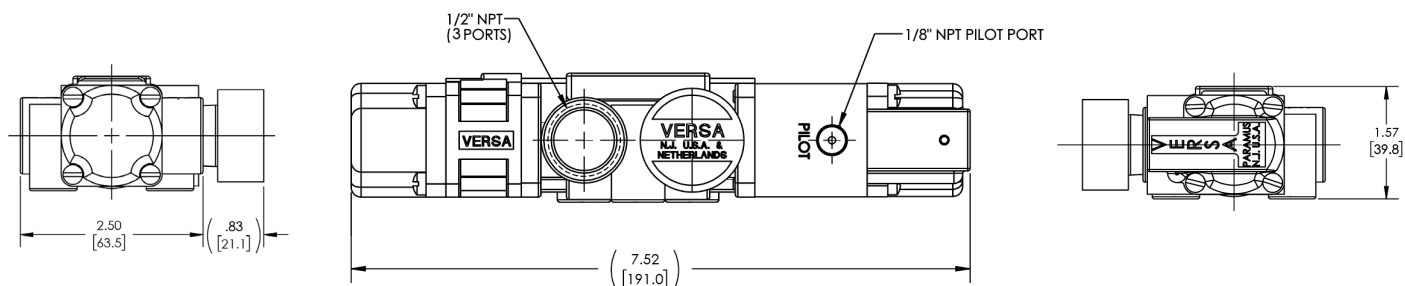
VSA-3501-316-PWRPD-DE5



POWERSHIFT OPTIONS

Options (suffix)	Description
-DPP	Double Pilot Piston
-PWRP	Double Pilot Piston (-DPP) and Super Strong Spring (-SS)
-PWRPD	Double Pilot Piston with Super Strong Spring (-SS), and Dust Proofing (-DG)
-DE5	½" Dust Excluder Assembly

DIMENSIONS



VERSA
 22 Spring Valley Road
 Paramus, New Jersey 07652, USA
 Phone: 201-843-2400
 Fax: 201-843-2931

VERSA BV
 Prins Willem Alexanderlaan 1427
 7321 GB Apeldoorn, Netherlands
 Phone: +31-55-368-1900
 Fax: +31-55-368-1909

Email: sales@versa-valves.com
 Web: www.versa-valves.com

