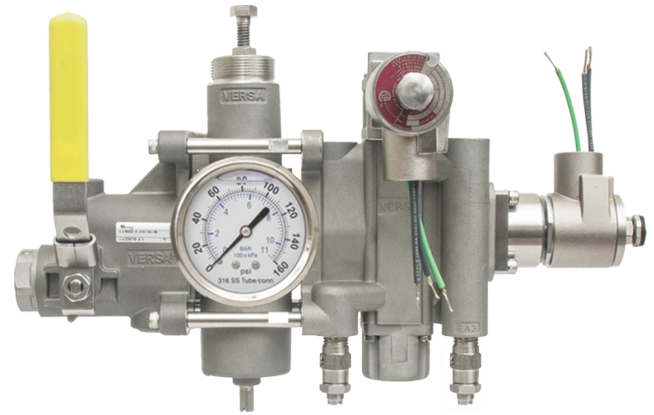


VMAP- MODULAR AIR PACKAGES

REAL WORLD CHALLENGES

- Time and cost associated with designing, sourcing, and installing control systems in the actuator control industry
- Sourcing components from multiple vendors
- Developing multiple bills of material for fittings, tubing, and bracketing
- Designing a complete layout using many different system components
- Installation time and costs to mount and install



THE VERSA SOLUTION

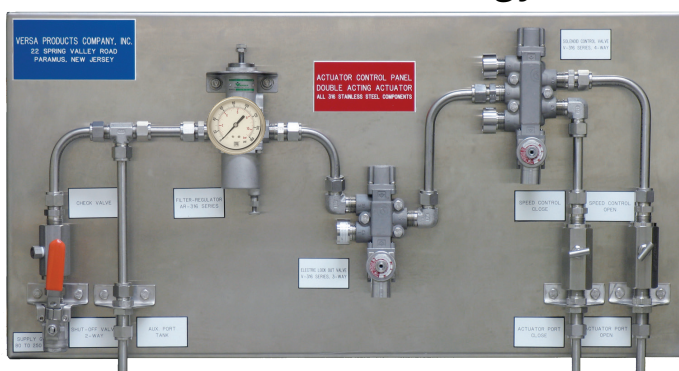
The VERSA Modular Air Package (VMAP) is a compact air management system that will provide a full range of pneumatic accessories and functions to meet the needs of most control systems in the actuator control industry. The VMAP offers you the flexibility needed to create a solution tailored to meet your application needs. Major components include shutoff and check valves, filter/regulators, speed controls, and directional control valves. The VMAP simplifies the design process by combining all common circuit components into one integrated assembly.

- Smaller Package
- Less Weight
- Reduce Leak Points
- Reducing fittings, tubing, and related labor and installation costs

FEATURES:

- 316 Stainless Steel
- Can be mounted in any orientation
- Threaded mounting holes are supplied as standard or utilize an optional bracket
- Auxiliary port for monitoring and pressure take off
- Speed controls and relief valves
- Seals for low-temperature operations
- 100% testing of complete assembly
- 10-year warranty on the complete circuit

Current Technology



VERSA Solution



VMAP and Panel shown at scale

VMAP OPTIONS

Shutoff Module

The Shutoff Module is the pressure inlet to the valve assembly, with a ball valve shutoff, a tank, an auxiliary port, and an optional check valve for emergency supply.

Air Prep Module

The Air Prep Module consists of regulators, filters, gauges, and drains. Based on Versa's AR-316 series, this proven design is small but with a high flow. Regulators are equipped with tamper-proof adjustment locknut and a manual drain as standard. Auto drain can be specified as an alternative option.

Control Valve Module

The Control Valve Module is based on Versa's V-316 series. This proven design provides reliable valve modules configurable in parallel or series flow circuits with standard 3 and 4-way valve functions with latching, auto reset, and manual reset options.

Solenoid Operators

The solenoid operators are suitable for operation in hazardous locations, meeting ATEX, IECEx, INMETRO, and North American certifications and approvals.

Common Circuits

- Fail Closed
- Fail Last
- 1oo2
- 2oo2
- Bypass & Test
- ESD Latch and Process Control