

ADJUSTABLE SPRING RETURN VALVE

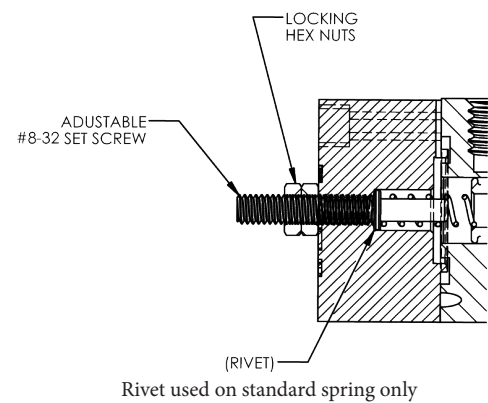
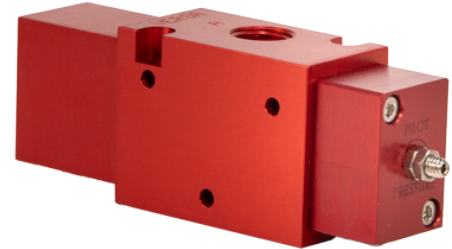
C5 and C7 Series Valves



The C5 and C7 Series is now available with an adjustable spring setting that provides maximum flexibility. By adjusting the set screw located in the spring cap, you can easily customize the pilot pressure to fit your specific requirements. This feature provides versatility and ensures it operates efficiently for your application needs.

SPECIFICATIONS

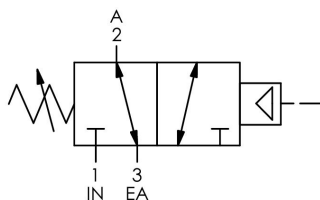
| | |
|---------------------------|---|
| Description: | C5 & C7 Series Valves |
| Function: | 3 & 4 Way |
| Actuator(s): | Adjustable Pilot / Spring Return |
| Body: | Body Ported C5: 1/8" NPT C7: 1/4" NPT |
| Temperature Rating: | -4°F to 203°F, -20°C to 95°C |
| Pressure Range: | VAC-115 psi, VAC-7.93 bar |
| Flow: | C5: 0.75 Cv C7: 1.5 Cv |
| Media: | Air - Inert Gas Natural Gas |
| Pilot Range: | See table below "Spring Options" |
| Materials of Construction | Body: Anodized Aluminum |
| | Seals, Valve Proper: FKM standard |



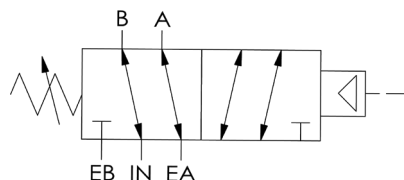
SPRING OPTIONS

| Spring Options | Pilot Pressure $\pm 10\%$ (psi) | No. of Turns |
|----------------|---------------------------------|--------------|
| Standard | 8 to 16 psi, 0.55-1.03 bar | 0 to 10 |
| -S | 12 to 30 psi, 0.82-2.06 bar | 0 to 6 |
| -SS | 17 to 38 psi, 1.17-2.62 bar | 0 to 5 |

FLOW SCHEMATICS

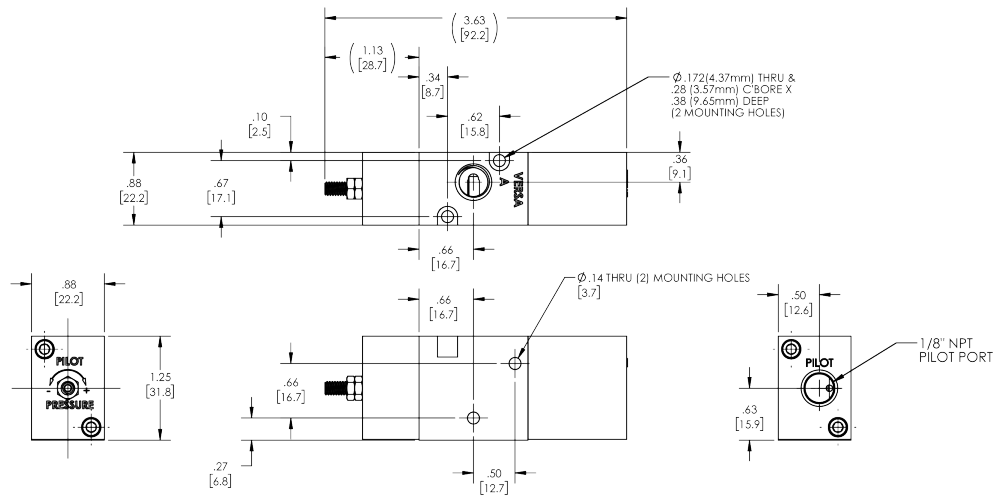


3-Way Valve
C5: CAP-3201-APV
C7: CAP-3301-APV

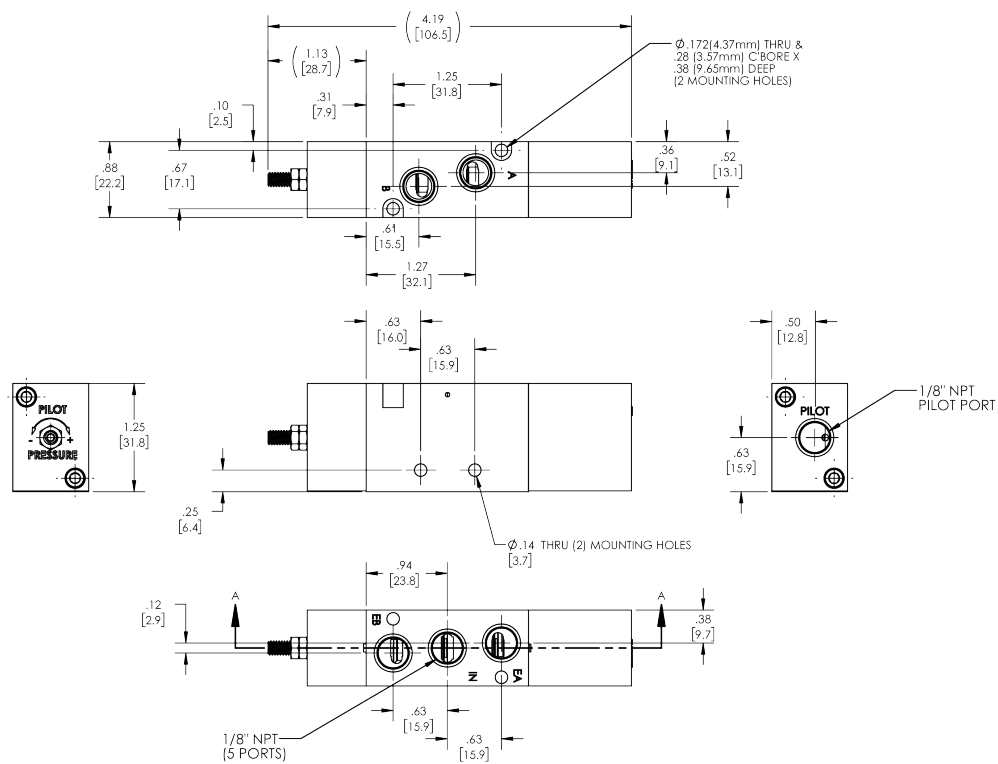


4-Way Valve
C5: CAP-4202-APV
C7: CAP-4302-APV

DIMENSIONS- C5 SERIES VALVES

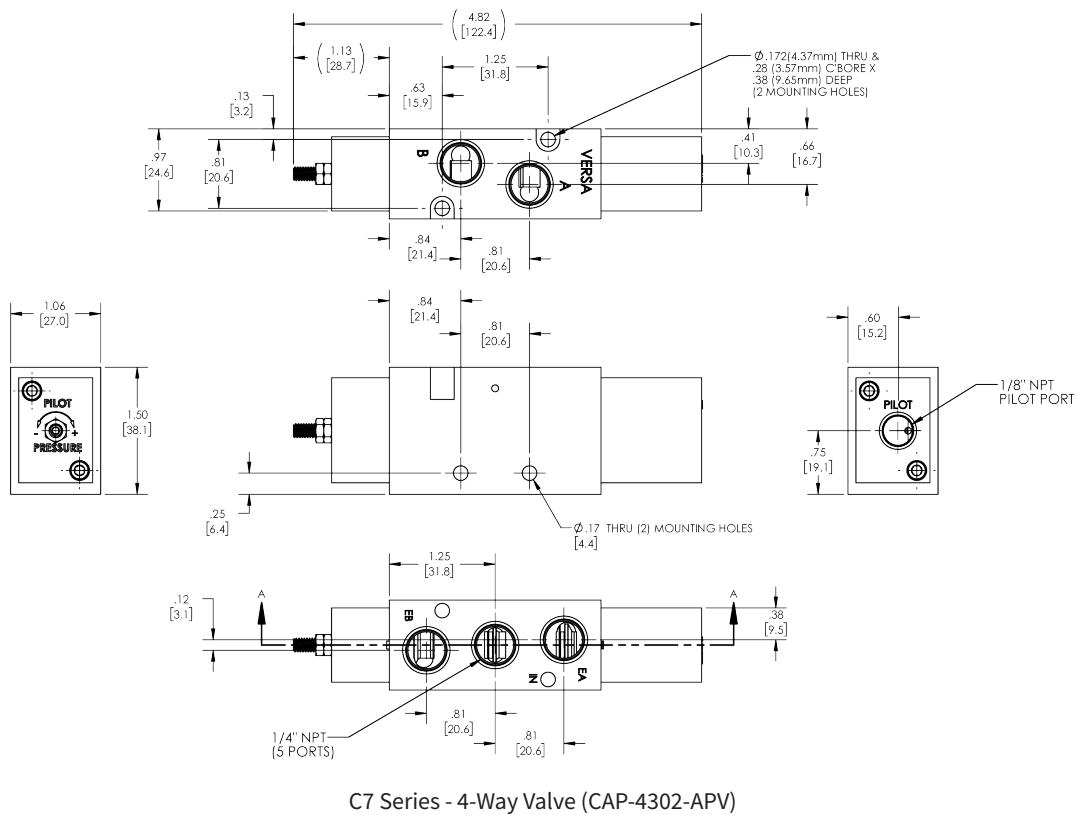
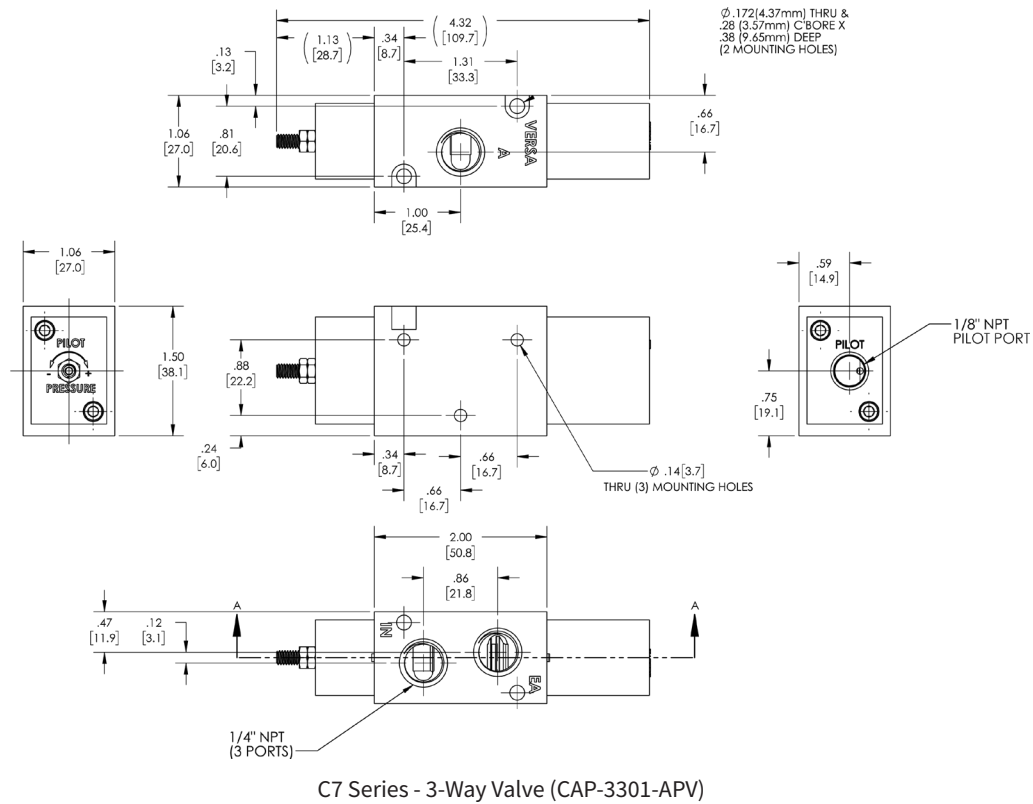


C5 Series - 3-Way Valve (CAP-3201-APV)



C5 Series - 4-Way Valve (CAP-4202-APV)

DIMENSIONS- C7 SERIES VALVES



VERSA
 22 Spring Valley Road
 Paramus, New Jersey 07652, USA
 Phone: 201-843-2400
 Fax: 201-843-2931

VERSA BV
 Prins Willem Alexanderlaan 1427
 7321 GB Apeldoorn, Netherlands
 Phone: +31-55-368-1900
 Fax: +31-55-368-1909

Email: sales@versa-valves.com
 Web: www.versa-valves.com

