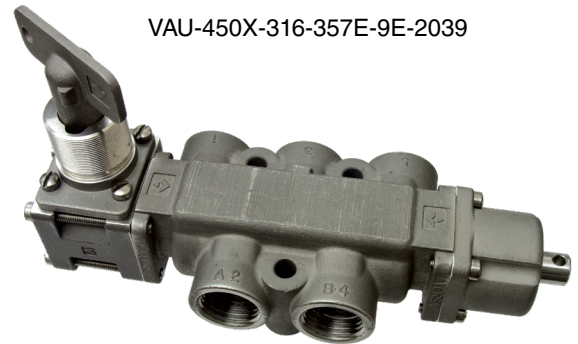


SOLENOID CONTROL SYSTEM TEST

Stainless Steel Bypass Valve

Versa Products Company is excited to offer a valve option for the testing of a solenoid valve control circuits in applications where closing down or “shutting in” the system is not an option. Versa’s bypass valve allows the testing and replacement of a component within the circuit while not shutting down the main system. Versa’s solution is simple to apply, operate and accomplished in one valve. The, basic valve is a 3 position manual valve. Operation is as follows:



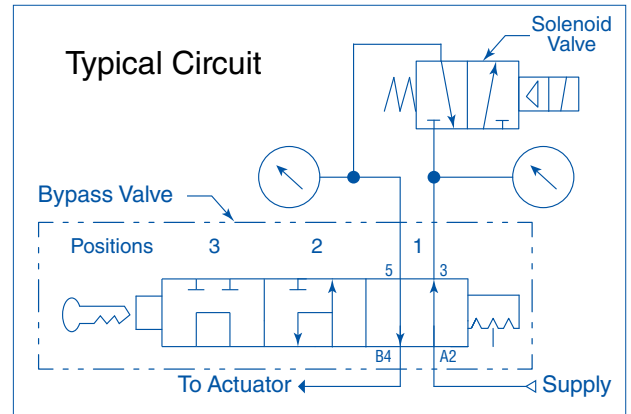
VAU-450X-316-357E-9E-2039

Position 1. This position is the *normal* position or the regular operation mode.

Position 2. This position places the control circuit in the *test* mode. In this position the bypass valve allows pressure to the circuit for testing while maintaining pressure on the actuator. With pressure to solenoid inlet and solenoid circuit outlet blocked/isolated this position allows complete testing of solenoid circuit while not shutting down the system.

Position 3. This position places the control system in a *replace* mode. Should it be determined that a component in the control circuit needs to be repaired and or replaced this position allows total isolation from pressure while still holding system pressure to actuator.

Based on Versa’s proven C-316 or V-316 series high flow valves. Actuation is available as a rotary switch or key operated. Optional position indication available.



Size	Detent	Key Actuator	Rotary Actuator
1/4"	Detent	CAU-430X-316-314E507-2039	CAU-430X-316-357E-2039
	Detent w plunger extension	CAU-430X-316-314E507-9SE-2039	CAU-430X-316-357E-9SE-2039
1/2"	Detent	VAU-450X-316-314E507-2039	VAU-450X-316-357E-2039
	Detent w plunger extension	VAU-450X-316-314E507-9E-2039	VAU-450X-316-357E-9E-2039

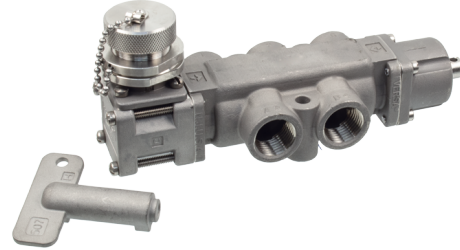
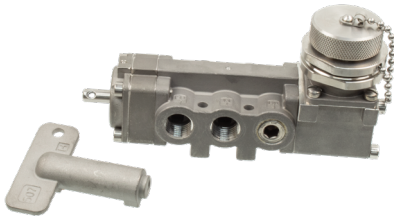
Description:	1/4" Solenoid Bypass valve
Function:	Custom circuit, 3 position (see circuit above)
Actuator:	Manual, detented
Pressure:	0 to 150 psi (0- 14 bar)
Flow:	2.0 Cv in normal position
Temperature:	5°F (-15°C) to 300°F (149°C)
Ports:	1/4" npt
Media:	Air, Inert Gas, Natural Gas & Hydraulic
Materials;	
Body:	316 stainless steel
Actuators:	316 stainless steel
Seals:	FKM
Options:	
Position indicator:	Suffix -9SE
Low temp Buna:	Suffix -44

Description:	1/2" Solenoid Bypass valve
Function:	Custom circuit, 3 position, (see circuit above)
Actuator:	Manual, detented
Pressure:	0 to 200 psi (0- 14 bar)
Flow:	5.5 Cv in normal position
Temperature:	5°F (-15°C) to 300°F (149°C)
Ports:	1/2" npt
Media:	Air, Inert Gas, Natural Gas & Hydraulic
Materials;	
Body:	316 stainless steel
Actuators:	316 stainless steel
Seals:	FKM
Options:	
Position indicator:	Suffix -9E
Low temp Buna:	Suffix -44

ByPass Valve

CAU-430X-316-314E***-9SE-2039
Shown with key actuation and optional position indicator.

VAU-450X-316-314E***-9E-2039
Shown with key actuation and optional position indicator.



Dimensions

